

A Cloud in my tummy TECHNICAL RIDER

PERFORMANCE

Duration : 50 minutes

Choreographers : Audrey Bergeron and H el ene Langevin

Agent : Ya elle Azoulay, +1-514-912-9235, danse@agenceresonances.com

Tech. Director : Martin Lepage +1-514-808-6607 le.martinlepage@gmail.com

TOURING CREW

- 1 lighting/technical director
- 1 sound technician
- 1 choreographer or tour manager
- 3 dancers

TECHNICAL SPECIFICATIONS OF THE THEATRE

Le diffuseur s'engage   faire parvenir, sans d elai, la fiche technique et plan de salle   jour, de la salle, au directeur technique de la compagnie.

PRE-PERFORMANCE SCHEDULE

- Pre-hang : 2 h compulsory in accordance with the LX plan prior to our arrival (plan to be adapted to the performance space)
- Set: 4 h (subject to change, depending on the space)
- Dancers' pre-performance warm-up: 2 h 30 for the first show (for spacing and test), then 2 hours is enough for the other show
- Strike: approximately 1 h

A standard timetable for a well-equipped and easy-to-use performance space follows hereafter. Schedule may vary depending on the space: Pre-installation the preceding day, set from 8 a.m. to 12 p.m. on the day of the performance, dancers arrive at 12:30 p.m., technicians go on break, performance at 3 p.m., strike at 4 p.m., end of strike at 5 p.m.

TO BE PROVIDED BY THE VENUE:

PERSONNEL REQUIRED FOR SET UP AND TAKE DOWN

The venue will provide 4 technicians:

- 1 Technical Director / stagehand
- 1 sound technician
- 1 chef electric
- 1 electric

We need the 4 technicians to assist with installing the dance floor and the set. If not, additional personnel will be required. The company may also need more staff, depending on the space, the time frame for the setup or whether the venue is unionized.

PERSONNEL REQUIRED FOR THE PERFORMANCE

- TD or person in charge of the venue must be present, we operate our boards.

STAGE AND PERFORMANCE AREA

- Resistant flooring suitable for dance performances (**we provide our dance floor**)
- Depth: minimum: 20'//ideal: 28'
- Width: minimum: 26'//ideal: 32'
- Height clearance: minimum: 12'//ideal: 22' (subject to change)

STAGE MASKING

- Italian masking, a minimum of 4 black velour legs
- No need for house curtain

LIGHTING

- Max. 50 standard category lights with necessary wiring
(the company can adapt and provide certain lighting components, to be discussed with the TD of Bouge de la)
- 48 dimmers min. / 60 dimmers max.
(could possibly work with 24 dimmers, to be discussed depending on the space and available equipment.)
- 6 booms, 6' minimum (2 can be supplied by the company)
- DMX (XLR 3) cabling and three AC lines for our LED and moving light

Company TD Initials _____

Venue TD Initials _____



- A Haze-style smoke machine, MDG Atmospheres ideally
- We need 15 gobo holder B size (we can provide 6 ETC model)

COMMUNICATION

- 3 Clear-Com single-ear headset packages (2 for the control booth and 1 backstage)

SOUND

- Sound system with a power of 100 dB required at the mixing console
- 3-way speaker system with subwoofer located on the proscenium arch (foreground)
- 4 stage monitors located at each corner of the stage
- 1 microphone SM58 on mike stand stage right wing with 50' long XLR
- 2 monitors for surround system on stands located behind the audience (the company can provide two monitors as needed)
- In the control booth, our sound board (SQ5) and our lighting board (MA3 on PC) must be side by side, for midi control
- The booth is preferably located in the performance space

DRESSING ROOMS AND LODGING

- 1 or 2 dressing room for 3 dancers (with functional shower, sink, mirrors, and toilets)
- Access to a filtered water or spring water source to fill water bottles
- Ice (made from water) on hand in case of injury
- Fresh fruit (optional) is appreciated by the dancers
- When catering is offered (optional), find out about any known dietary restrictions at info@bougedela.org.
- Washing machine/dryer (please notify us if these are not on hand at the space)
- Clothing iron or steamer (*can be provided by the company*)
- The temperature on stage must be at 22° Celsius
- Parking for one 14' truck and one minivan
- We require 7 single occupation bedrooms for lodging in a 3-star standard (minimum) non-smoking hotel with free WIFI

BOUGE DE LÀ will provide:

DÉCOR

- The set consists of a 16-foot-high colorful curtain by 35 feet wide, all suspended either from a pole or from our Ladder Truss. We have all the rigging equipment (chain block, sling, and shackle)
- 4 wheeled garment racks with integrated LEDs remain on stage
- The company supplies its own painted marley dance floor, which is 32 feet wide by 27 feet, as well as the tape for securing it.

SOUND

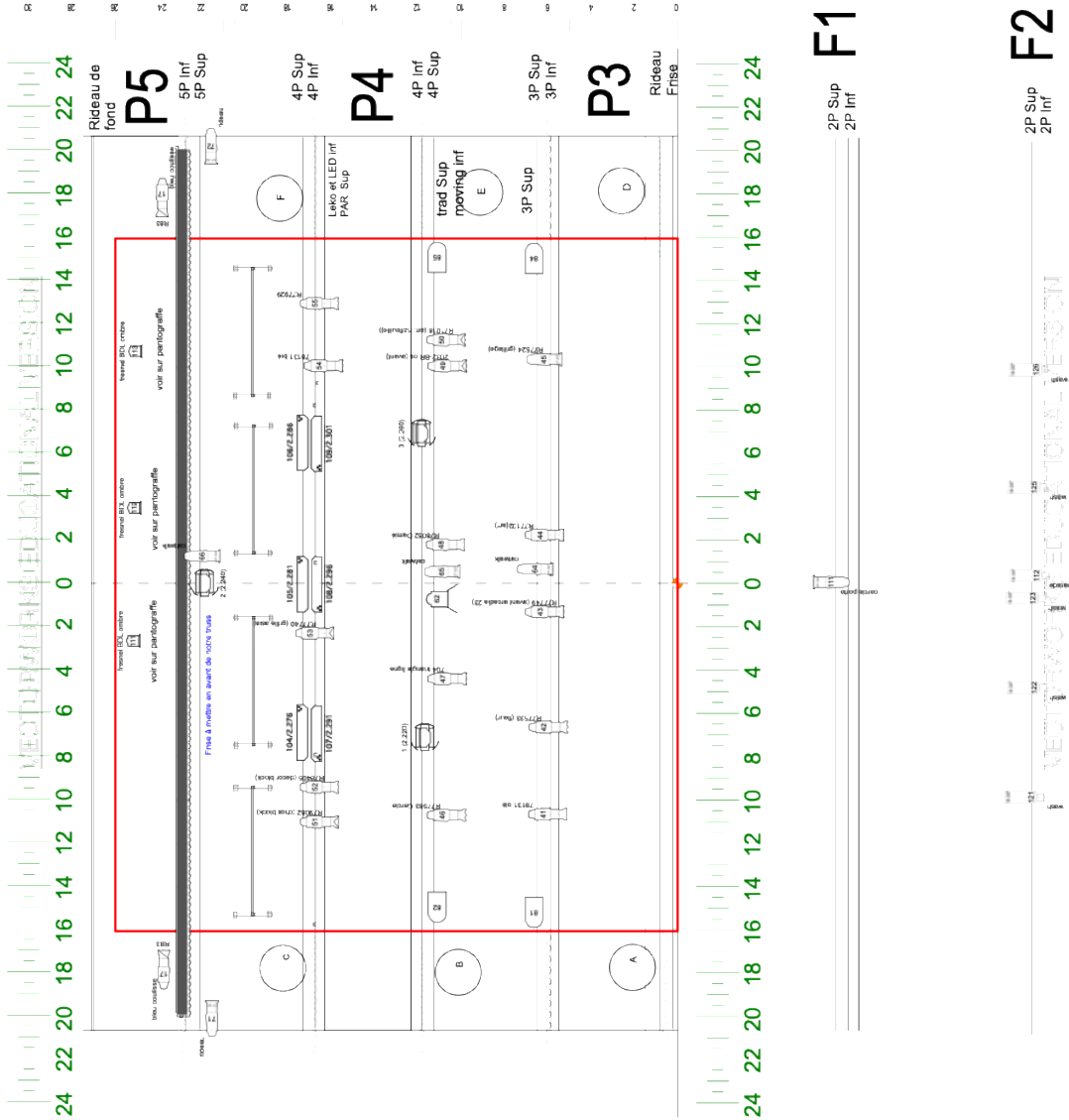
- We use our Allen and Heat SQ5 sound board
- Please specify if you are using a digital snake; we can bring our snake compatible with the SQ5.

Performances are operated with Qlab software by our sound technician, while the technical director controls the lighting

LIGHTING

- We can provide gels if needed
- 9 Blizzard mini cob LEDs (3 floor and 6 pipe, plug with u-ground and XLR 3)
- 4 Moving lights Clay Paky Mini B, (1 floor front stage and 3 pipe) connected to your power supply

Company TD Initials _____
Venue TD Initials _____



Company TD Initials _____
 Venue TD Initials _____

BOUGE DE LÀ

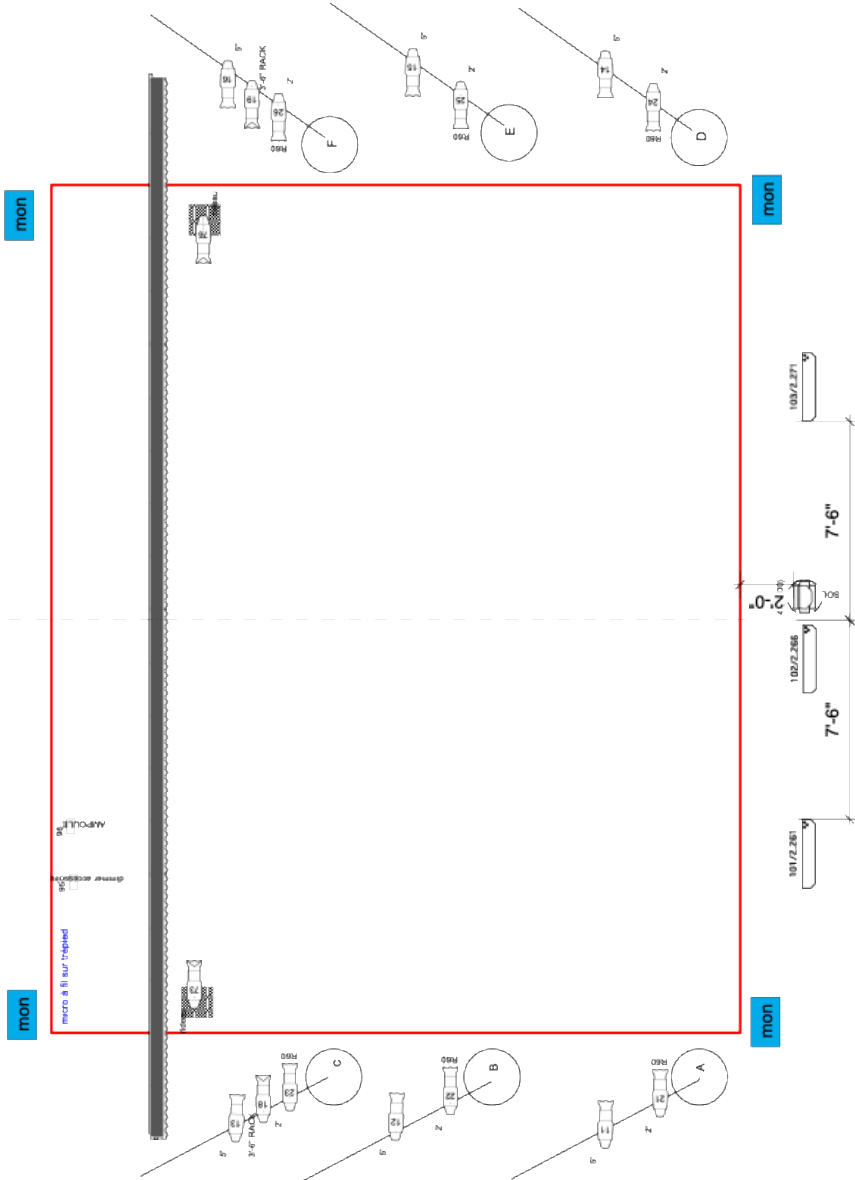
BANSE JEUNE PUBLIC

VECTORWORKS EDUCATIONAL VENTISION

Un Nuage dans mon ventre Bouge De là

Salle: MTL NORH

Instruments	User
Fresnel 1W	5
Fresnel 2W	0
ETC 30 deg	12
ETC 35 deg	16
ETC 26 deg	0
ETC 19 deg	0
ETC 25-50 deg	9 = FOH en place FOH en place
leko FOH 15/30	0
PAR 64 narrow	0
PAR 64 medium	6
Clay Paky Mini B	4 moving de Bouge de là 9 Led de Bouge de là
Blizzard photozoom	0
Legend	
dot in/s	Color
	Channel
design: Lucie Bazzo/Martin Lepage date: 3 sept 2024	
NOTE Éclairagiste de tournée et DT Martin Lepage 514-808-6607	
Salle ch 500 work light ch 501 (si besoin) MC ch 502 (si besoin) Perche à 22'	



VECTORWORKS EDUCATIONAL VENTISION

Company TD Initials _____

Venue TD Initials _____