

# Mōnad

*Ebnflōh*

2024

## Contact

### General Director / Choreographer

Alexandra Landé

514-229-3403

[alexandra@ebnfloh.com](mailto:alexandra@ebnfloh.com)

### Technical Director

Zachary Dupuis

514-918-0025

[dupuiszachary@gmail.com](mailto:dupuiszachary@gmail.com)

### Production Director

Florence Cardinal-Tang

438-520-1090

[production@ebnfloh.com](mailto:production@ebnfloh.com)

[Ebnfloh.com](http://Ebnfloh.com)

DT Company \_\_\_\_\_

DT Venue \_\_\_\_\_

Page 1 de 5

Version : **October 2024**

**The show**

**Show duration:** 70 minutes without intermission

**Type of show:** Dance

**Touring team**

- 1 Technical Director and Lighting Designer.
- 1 Sound technician
- 1 dancer
- 1 musician / DJ

**THEATER TECHNICAL SHEET**

**The presenter must send the updated technical sheet and floor plan to the company's technical director without delay.**

**SETUP SCHEDULE**

- Pre-hanging: 2 hours (Depending on available technical equipment) – (Mandatory compliance with the lighting plan before our arrival). An adapted lighting plan will be provided upon receipt of an empty stage plan.
- Setup: 5 hours (may vary depending on the venue).
- Teardown: approximately 2 hours (depending on available technical equipment).

**A typical schedule for an accessible venue with adequate equipment:**

*Pre-hanging the day before, setup from 8:00 a.m. to 2:00 p.m. on the day of the show, artists' arrival at 3:00 p.m., show at 7:30 p.m., teardown at 10:00 p.m., teardown completed by 11:59 p.m.*

**TO BE PROVIDED BY THE PRESENTER:****PERSONNEL NEEDED FOR SETUP AND TEARDOWN**

The presenter must provide 5 technicians (or more, depending on the venue and time available for setup):

- 1 Technical Director present during setup or a stagehand
- 1 Sound chief
- 1 Electrical Chief / Lighting Designer
- 2 General Technicians.

**PERSONNEL NEEDED FOR THE SHOW**

- Presence of the technical direction or stage manager.

**STAGE AND PERFORMANCE AREA**

- Depth: Minimum 26' (7.90m), ideal 28' (8.5m)
- Width: Minimum 36' (11m), ideal 40' (12.2m)
- Height clearance: Minimum 18' (5.50m), ideal 20' (6m)

**STAGE DRESSING**

- No stage dressing (to be confirmed based on the venue)
- No house curtain required
- 1 tulle of 20' height by 40' width (black OR gray)
- **DO NOT use dance mats (Marley)**

**LIGHTING**

*A lighting plan will be created using the theater's equipment.*

*In the **appendix**, you will find a plan from the first creation phase.*

*If possible, we will use your gels (filters).*

- 1 ETC Element 2 console OR an ETC Ion console.
- 1 Littlite (task light).
- 2 boom of 10'
- 2 boom of 4'
- 9 Floor base
- 8 Colorado solo 3 (or equivalent) (rental possible)
- 2 Iris drop

**SON**

- 1 stereo sound system with subwoofers covering the entire venue.
- 4 speakers on stage (one in each corner)
- 1 sound console with a minimum of 8 inputs and 8 outputs at FOH
- 1 sound console with a minimum of 8 inputs and 4 outputs on stage.
- 1 sm58 microphone
- 2 passive stereo DI box
- 1 microphone stand

**BOOTH**

- The control booth should preferably be in the audience area (FOH)
- Lighting and sound booths should be in the same space.

**AUTRE**

- 3 tables (4' x 6' or 4' x 8')
- 2 pipes (20' or pipes and K-clamp to make two 40' sections)
- 1 V or T-shaped K-clamp.
- 1 step ladder (used by the artist during the performance).
- 1 office chair with wheels (to be discussed before arrival).

**DRESSING ROOMS, GREEN ROOM AND ACCOMMODATIONS**

*1 or 2 dressing rooms for 4 to 6 people (chairs, lighted mirrors, makeup tables, sinks, clothing racks with hangers, towels, soap, showers, and functional toilets). These spaces must be clean and secure.*

- Spring water
- Ice (water-based) available in case of injury.
- Fresh fruits and snacks (optional but appreciated).
- Washer/dryer (notify us if unavailable)
- Parking for a 12' truck (3.66 meters) and a minivan.

**PROVIDED BY Ebnflöh:**

**SET**

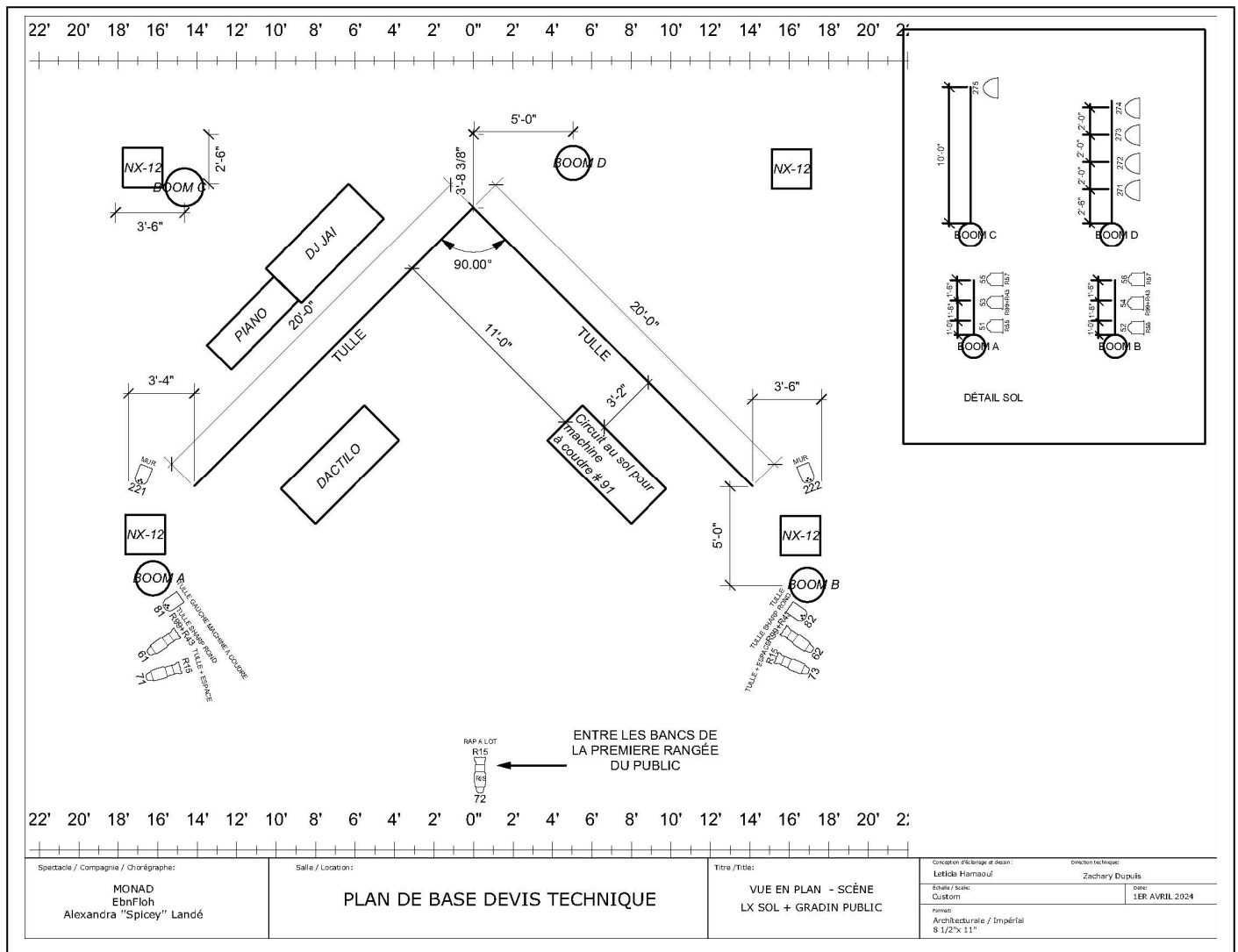
- 1 Sewing machine
- 1 typewriter
- 1 roll of kraft paper

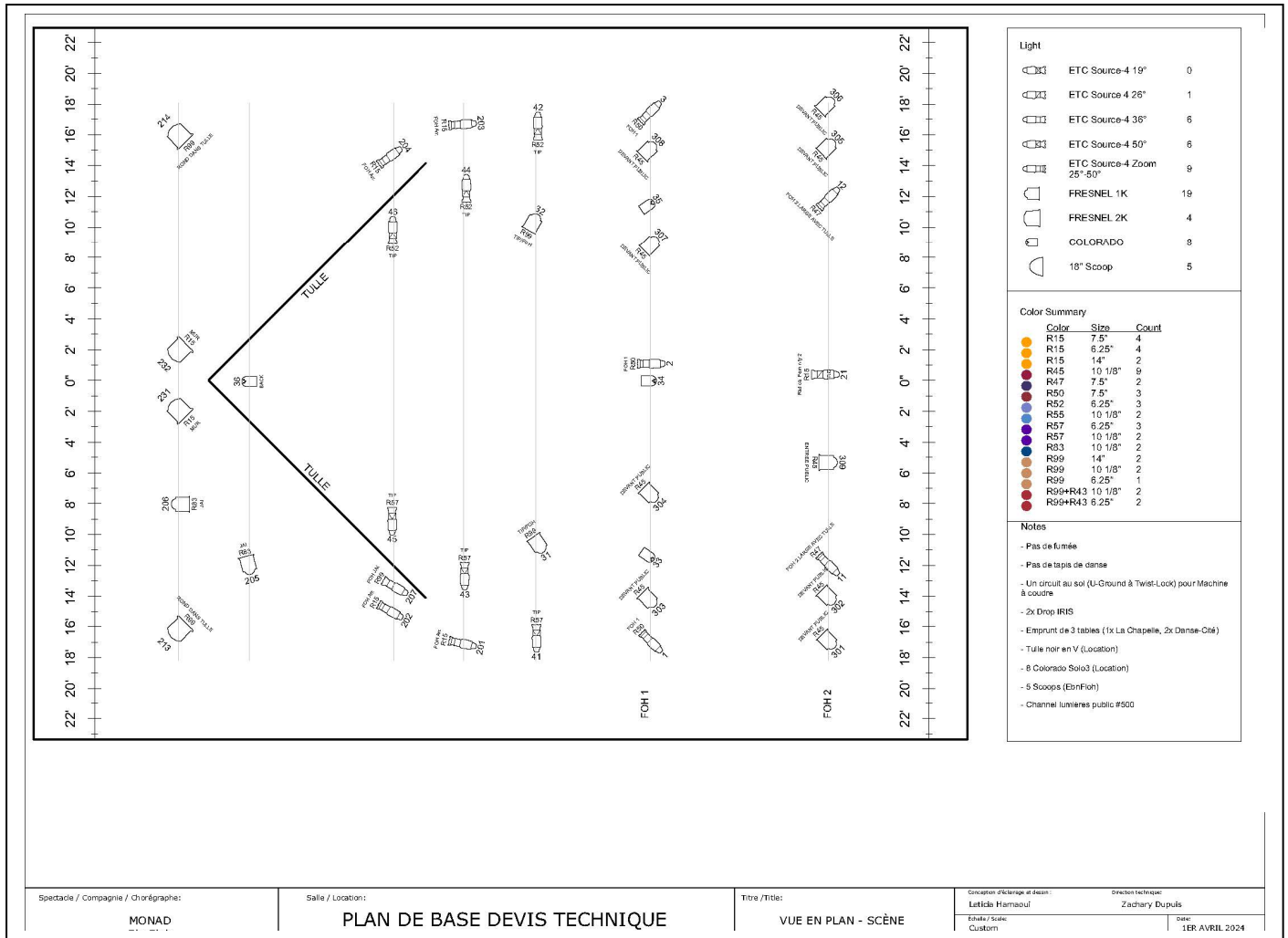
**LIGHTING**

- 5 scoop lights
- 8 Colorado solo 3 (depending on equipment availability or rental).

**SOUND**

- 1 laptop computer + 1/4" to 1/8" jack cable
- 1 USB sound card.
- 1 synthesizer/piano.





Spectacle / Compagnie / Chorégraphe:

MONAD

Salle / Location:

PLAN DE BASE DEVIS TECHNIQUE

Titre / Title:

VUE EN PLAN - SCÈNE

Conception d'éclairage et dessin:

Leticia Harnault

Direction technique:

Zachary Dupuis

Échelle / Scale:

Custom

Date:

1ER AVRIL 2024

### View from the FOH

La Chapelle Theater, Montreal, Qc

