

THE 26 LETTER DANCE TECHNICAL RIDER

THE SHOW

Duration : 55 min.
Choreographer: H el ene Langevin
Agent :  Elisabeth Comtois +514-273-3093 e.comtois@stationbleue.com
Technical Director: Martin Lepage +514-808-6607
le.martinlepage@gmail.com

THE TEAM ON TOUR

- 1 technical director / stagehand
- 1 sound technician / vid eo / light
- 1 choreographer or tour manager
- 4 dancers

Theatre rider

The Presenter agrees to forward, without delay, the venue's most recent technical data sheet to the company's technical director.

Technical schedule

- Pre hang : mandatory before our arrival (the plan will be adapted to the venue)
- Load in: 4 hours (may vary depending on the venue)
- Warm up before performance : 2 hours (2h30 in small venue we need more time for spacing)
- Strike : around 1h30

TO BE PROVIDED BY THE PRESENTER :

CREW NEEDED FOR LOAD IN

- We need 4 technicians, **including the TD** (could be more, depending of the venue and the time given for the take in)

CREW REQUESTED FOR THE SHOW

- Technical director of the venue or a person responsible to open the theatre

STAGE

- Resilient floor adapted for dance
- Depth: minimal : 18' // ideal : 28'
- Width : minimal : 24' // ideal : 32'
- Height : minimum clearance of 12' // ideal : 22'

MARKING

- Italian style masking, 4 set of black legs in velour
- Ideally we need a crossover behind the stage (please inform the TD if not possible)

LIGHTING

- There are 2 different light plot available depending on the venue
- 75 traditional lamp maximum, with all needed wiring cable
(the company can adapt the light plot to fit the venue, and provide some lamps, to be discussed with the TD)
- 48 dimmers min. / 60 dimmers max.
(It's possible to adapt the show to 24 dimmers, , but it must be agreed upon by the TD)
- 6 to 8 booms of 6' minimum (the company can provide two booms)
- ETC Express console (the company can provide the board)
- Fog machine (MDG Atmosph ere type)
- DMX wiring (XLR3) and 2 AC power lines for our LEDs

COMMUNICATIONS

- 2 clear com stations (1 at the sound booth and 1 back stage center, behind the set)

Company's TD initial _____

Presenter's TD initial _____

BOUGE DE LÀ

DANSE JEUNE PUBLIC

SOUND

- Sound system that delivers 100db to the sound booth
- 3 way stereo system with subwoofer
- 2 - 4 monitors on stage
- 2 monitors in the audience on stand as a surround sound reference (the company may provide these if needed)
- At the tech table, the sound board (X32) and the light board (ETC EXPRESS) must be side by side
- We prefer not to mix the show in a closed booth, if possible

DRESSING ROOMS

- 1 or 2 dressing room for 4 dancers (Shower, washbowl, mirrors, functional toilets)
- Spring water
- Ice (water base) available in case of injury
- Fresh fruits (optional) are appreciated by the dancers
- Washer-dryer (if available)
- Electric or steam iron (may be provided by the company)
- The temperature on stage must be 22° Celsius
- Parking for a 16' truck and one minivan

BOUGE DE LÀ WILL PROVIDE :

SET

- The set is made of a wooden wall, 22' in length by 8' high and 4' deep, mounted on a metal frame. It is self supporting. (see picture below)
- We provide our own dance floor and the tape.

SOUND

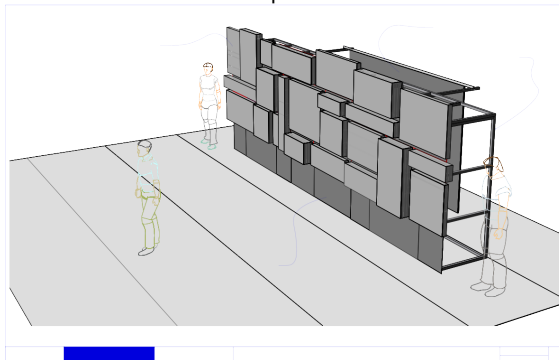
- We use our own sound console X32
- The show is run with Q-lab by the sound-light-video technician, and the TD is back stage as stagehand

LIGHT

- We can provide the Gels if needed
- 2 black gun, UV light.
- 11 LED Wall Washer, to be plugged in u-ground and an XLR 3 connected in our optosplitter, côté cour (right), in the universe 2 of the ETC EXPRESS,
- (each LED linked itself with it's own AC et DMX wire)
- **We have a scene where we use our water base smoke machine to create a wall of smoke, it's a fast disappearing smoke. If it's not possible to use smoke in the venue please let the TD know as soon as possible so we can consequently adjust the scene**

VIDEO

- Video projector placed on the floor at the front of the stage
- We have our own video snake that includes an AC-DMX to power the video and to send DMX to the optosplitter



Company's TD initial _____

Presenter's TD initial _____

Page 2 of 3

up-date: 8 dec 2016

BOUGE DE LÀ

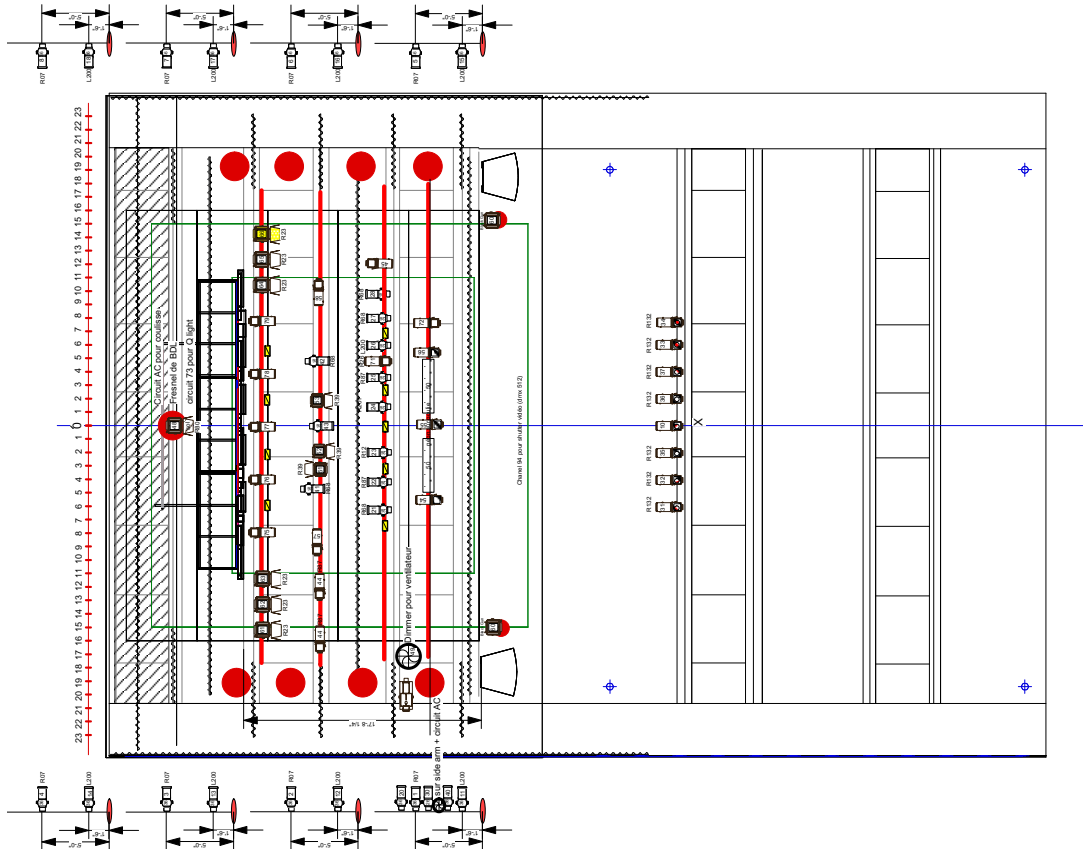
DANSE JEUNE PUBLIC

Bouge de là
 ABCEDAIRE
 Plan d'éclairage Montreal Nord
 Conception lumière: Caroline Ross
 Dessiné par : Caroline Ross
 Cell: 418-262-3656
 rosscaroline@ccapcable.com
 Version Tour

Légende:

On va voir là ont	Symboles	Projecteurs
10		ETC zoom, 15-30, 1 K
13		ETC zoom, 25-50, 1 K
7		Fresnels 8", 2K
3		Fresnels 6", 1K
2		Fluoresecents
0		Leko ETC 19 degrés
12		Leko ETC 26 degrés
18		Leko ETC 36 degrés
2		Block (générallement commuté)
11		Cobor Blast (à utiliser par la compagnie)
1		Machine à fumée (à utiliser par la compagnie)
1		Projecteur vidéo, (à utiliser par la compagnie)
2		Ventilateurs, (à utiliser par la compagnie)

76 Projecteurs
 68 dimmers



Company's TD initial _____

Presenter's TD initial _____