

GLITCH TECHNICAL SPECIFICATIONS

PERFORMANCE

Duration: 50 minutes

Choreographer: H el ene Langevin

Agent :  elisabeth Comtois + 514 273-3093 e.comtois@stationbleue.com

Tech. Dir.: Martin Lepage + 514-808-6607 le.martinlepage@gmail.com

TOURING CREW

- 1 lighting/technical director
- 1 sound/video technician
- 1 choreographer or tour manager
- 4 dancers

TECHNICAL SPECIFICATIONS OF THE THEATRE

The venue shall provide an up-to-date specifications sheet in a timely manner to the company's technical director.

PRE-PERFORMANCE SCHEDULE

- Pre-installation: compulsory in accordance with the LX plan prior to our arrival (plan to be adapted to the performance space)
- Set: 4 h (subject to change, depending on the space)
- Dancers' pre-performance warm-up: 2 h 30 for the first show (for spacing and test), then 2 hours is enough for the other show
- Strike: approximately 1 h

A standard timetable for a well-equipped and easy-to-use performance space follows hereafter. Schedule may vary depending on the space: Pre-installation the preceding day, set from 8 a.m. to 12 p.m. on the day of the performance, dancers arrive at 12:30 p.m., technicians go on break, performance at 3 p.m., strike at 4 p.m., end of strike 5 p.m. if a dark stage is require, this may change the schedule.

TO BE PROVIDED BY THE VENUE:

PERSONNEL REQUIRED FOR SET UP AND TAKE DOWN

The venue will provide 4 technicians:

- 1 Technical Director / stage hand
- 1 sound technician
- 1 chef electric
- 1 electric

Or more depending on the space, the time frame for the set and if the venue is union.

We need that everyone can help install our dance floor and the set, if not then more people will be needed.

PERSONNEL REQUIRED FOR THE PERFORMANCE

- TD or person in charge of the venue must be present, we operate our board

STAGE AND PERFORMANCE AREA

- Resistant flooring suitable for dance performances, (we provide our dance floor)
- Depth: minimum: 20'//ideal: 28'
- Width: minimum: 26'//ideal: 32'
- Height clearance: minimum: 12'//ideal: 22'

STAGE MASKING

- Italian masking, a minimum of 4 black velour legs
- No need for house curtain

Company TD Initials _____

Venue TD Initials _____

BOUGE DE LÀ

DANSE JEUNE PUBLIC

LIGHTING

- 2 versions of the possible lighting plan, depending on the space
- Max. 45 standard category lights with necessary wiring
(the company can adapt and provide certain lighting components, to be discussed with the TD of Bouge de là)
- 48 dimmers min. /60 max.
(could possibly work with 24 dimmers, to be discussed depending on the space and available equipment.)
- 6 booms, 6' minimum (2 can be supplied by the company)
- MA2 on PC *(can be supplied by the company)*
- DMX (XLR 3) cabling and three AC lines for our LED and moving light
- We need absolutely Haze during the show for the laser, MDG Atmosphere ideally

COMMUNICATION

- 3 Clear-Com single-ear headset packages (2 for the control booth and 1 backstage)

SOUND

- Sound system with a power of 100 dB required at the mixing console
- 3-way speaker system with subwoofer located on the proscenium arch (foreground)
- 2 to 4 stage monitors located at each corner of the stage
- 2 monitors for surround system on stands located behind the audience (the company can provide two monitors as needed)
- In the control booth, our sound board (SQ5) and our lighting board (MA2 on PC) must be side by side, for midi control
- The booth is preferably located in the performance space

DRESSING ROOMS AND LODGING

- 1 or 2 dressing room for 4 dancers (with functional shower, sink, mirrors, and toilets)
- Access to a filtered water or spring water source to fill water bottles
- Ice (made from water) on hand in case of injury
- Fresh fruit (optional) is appreciated by the dancers
- When catering is offered (optional), find out about any known dietary restrictions at info@bougedela.org.
- Washing machine/dryer (please notify us if these are not on hand at the space)
- Clothing iron or steamer *(can be provided by the company)*
- The temperature on stage must be at 22° Celsius
- Parking for one 14' truck and one minivan
- We require 5 single occupation bedrooms and 1 double occupation bedroom for lodging in a 3-star standard (minimum) non-smoking hotel with free WIFI

TO BE SUPPLIED BY BOUGE DE LÀ:

SET

- The set consist of 12' high stairs stage left, self supported, the dancers come in by ladder hiding behind the legs.
- We have a black scrim that we hang as decoration, we have all the rigging to hang it on the pipe
- Many road cases will stay on stage for props
- The company supplies its own black dance floor marley and the tape.

SOUND

- We use our Allen and Heat SQ5 sound board
- Performances are operated with Qlab software by our video and sound technician, while the technical director controls the lighting

Company TD Initials _____

Venue TD Initials _____

Page 2 of 4

updated: **March 2024**

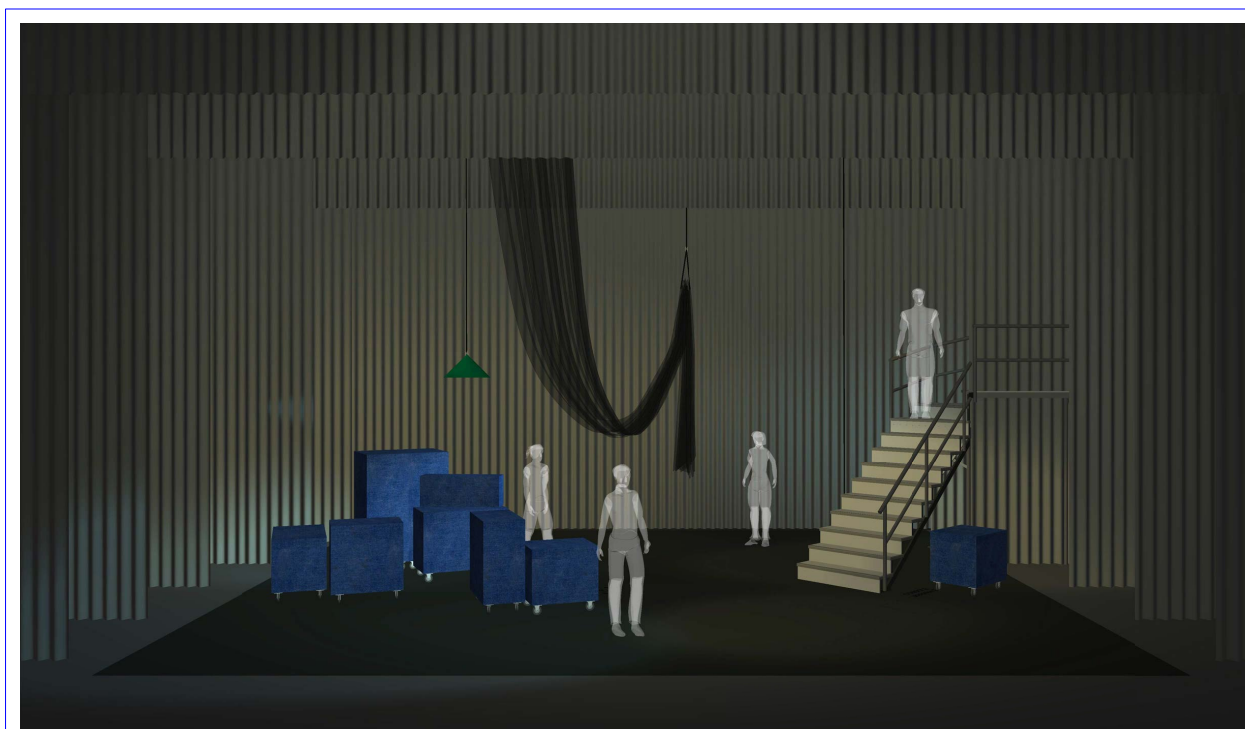
BOUGE DE LÀ

DANSE JEUNE PUBLIC

LIGHTING

- 11 LED X focus (5 on boom et 6 on pipe, plug with u-ground) in universe 2 to our optosplitter
- 3 Moving light Clay Paky Mini B, (1 floor et 2 pipe) powered by you and dmx to our optosplitter
- 1 Laser 6 Watt control by Q-Lab (we have a 250' snake to pass) We have a certificate for the manipulation of the laser
- 4 Blinders on floor with it's bundle and power to the moving light
- 1 suspended lamp attached to a rope, it's manipulated stage right by one dancer, we have the rigging and pulleys
- 1 smoke machine, Antari M5 for the laser effect in addition to yours
- We can provide gels as needed

À NOTER We really need smoke, if the venue is sensitive please advise the technical director to discuss this matter



<small>RICHARD LACROIX SCENARISTE ET METIER 514-272-4153 scen@richardlacroix.ca</small>	GLITCH BOUGE DE LÀ	FINAL # 1 RÉSIDENCE JAN 2022	DÉCORS EN SALLE — MCC MTL-NORD PERSPECTIVE	<small>SANS ÉCHELLE 21 DÉC 2021</small>	1/5
---	------------------------------	--	---	---	------------

Company TD Initials _____

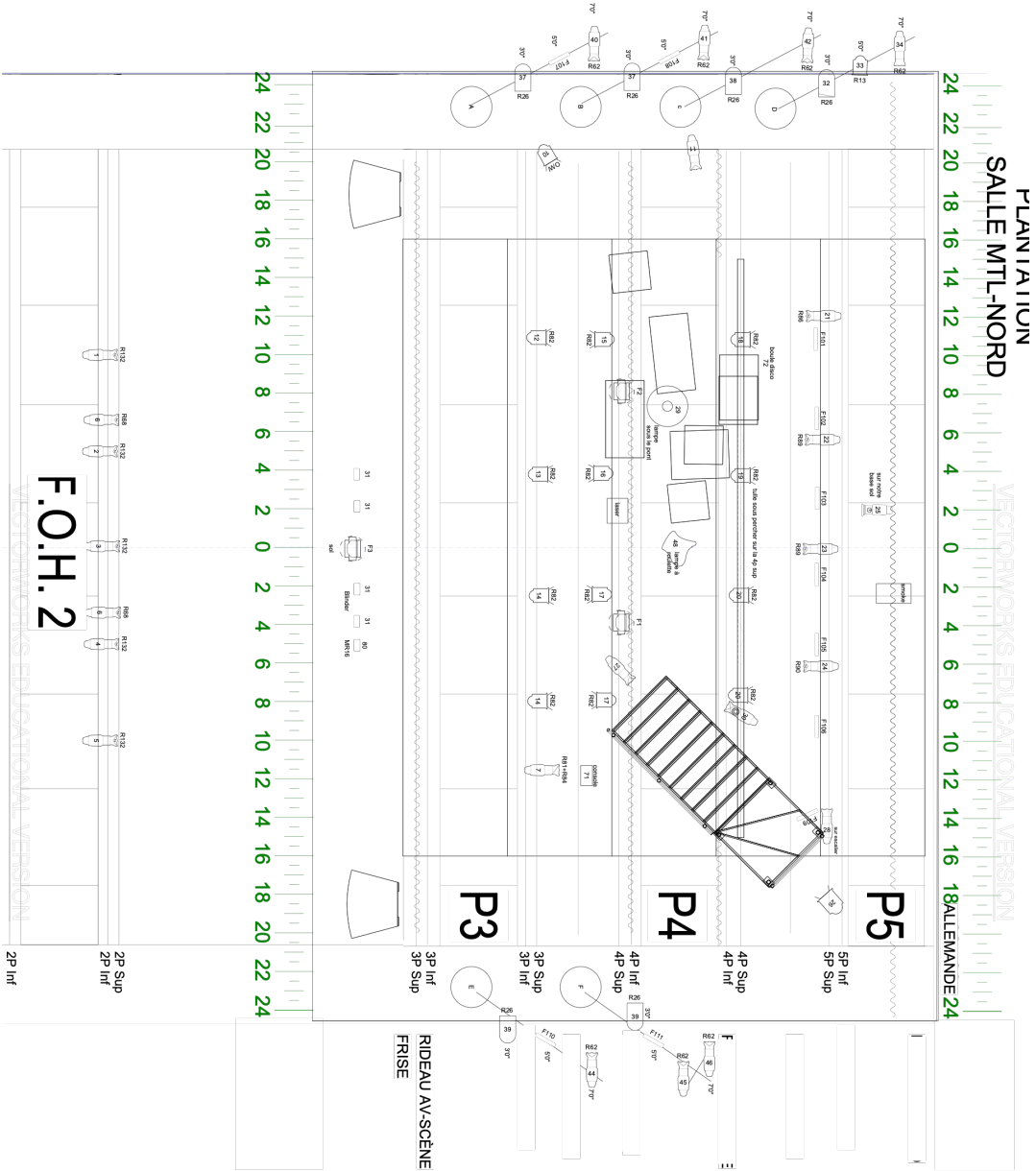
Venue TD Initials _____

Page 3 of 4

updated: **March 2024**

BOUGE DE LÀ

DANSE JEUNE PUBLIC



Light	Qty	Color Summary
Alimo MKL 6x RFL	6	Red: 2, Blue: 2, Green: 2
Alimo MKL 6x RNP	1	Red: 1, Blue: 1, Green: 1
Chauvet Striplight Combi 17x 10	11	Red: 1, Blue: 1, Green: 1, Yellow: 1, Cyan: 1, Magenta: 1, White: 1, Amber: 1, Purple: 1
ETC Source 15x9g	1	Red: 1, Blue: 1, Green: 1
ETC Source 20x9g	4	Red: 4, Blue: 4, Green: 4
ETC Source 20x9g	2	Red: 2, Blue: 2, Green: 2
ETC Source 20x9g	8	Red: 8, Blue: 8, Green: 8
ETC Source 20x9g	1	Red: 1, Blue: 1, Green: 1
ETC Source 20x9g 15-30deg	4	Red: 4, Blue: 4, Green: 4
ETC Source 20x9g 25-50deg	5	Red: 5, Blue: 5, Green: 5
ETC Source 20x9g 25-50deg	17	Red: 17, Blue: 17, Green: 17
ETC Source 20x9g 25-50deg	5	Red: 5, Blue: 5, Green: 5
ETC Source 20x9g 25-50deg	4	Red: 4, Blue: 4, Green: 4
Chauvet Striplight 3x4	4	Red: 4, Blue: 4, Green: 4
Moving Light		
ALCO Moving Light	3	Red: 3, Blue: 3, Green: 3
Stage Accessory		
4x8 Truss Stand	1	
7.5m x 1.5m Stand	17	
4x8	1	

Glitch

Company TD Initials _____
Venue TD Initials _____