

THROUGH MY EYES TECHNICAL SPECIFICATIONS

PERFORMANCE

Duration: 40 minutes

Choreographer: H el ene Langevin

Agent :  lisabeth Comtois + 514 273-3093 e.comtois@stationbleue.com

Tech. Dir.: Martin Lepage + 514-808-6607 le.martinlepage@gmail.com

TOURING CREW

- 1 lighting/technical director
- 1 sound/video technician
- 1 choreographer or tour manager
- 4 dancers

TECHNICAL SPECIFICATIONS OF THE THEATRE

The venue shall provide an up-to-date specifications sheet in a timely manner to the company's technical director.

PRE-PERFORMANCE SCHEDULE

- Pre-installation: compulsory in accordance with the LX plan prior to our arrival (plan to be adapted to the performance space)
- Set: 4 h (subject to change, depending on the space)
- Dancers' pre-performance warm-up: 2 h 30 for the first show (for spacing and test), then 2 hours is enough for the other show
- Strike: approximately 1 h

A standard timetable for a well-equipped and easy-to-use performance space follows hereafter. Schedule may vary depending on the space: Pre-installation the preceding day, set from 8 a.m. to 12 p.m. on the day of the performance, dancers arrive at 12 p.m., technicians go on break, performance at 2 p.m., strike at 3 p.m., end of strike 4 p.m. if a dark stage is require, this may change the schedule.

TO BE PROVIDED BY THE VENUE:

PERSONNEL REQUIRED FOR SET UP AND TAKE DOWN

The venue will provide 5 technicians:

- 1 Technical Director
- 1 sound technician
- 1 chef electric
- 1 electric
- 1 stage hand

Or more depending on the space, the time frame for the set and if the venue is union.

We need that everyone can help install our dance floor and the set, if not then more people will be needed.

PERSONNEL REQUIRED FOR THE PERFORMANCE

- TD or person in charge of the venue must be present, we operate our board

STAGE AND PERFORMANCE AREA

- Resistant flooring suitable for dance performances, (we provide our dance floor)
- Depth: minimum: 20'//ideal: 28'
- Width: minimum: 26'//ideal: 32'
- Height clearance: minimum: 12'//ideal: 22'

STAGE MASKING

- Italian masking, a minimum of 4 black velour legs
- Depending on the height and specifications of the space, a border will need to be placed above our truss to mask the chain hoists

Company TD Initials _____

Venue TD Initials _____

BOUGE DE LÀ

DANSE JEUNE PUBLIC

LIGHTING

- 2 versions of the possible lighting plan, depending on the space
- Max. 75 standard category lights with necessary wiring
(the company can adapt and provide certain lighting components, to be discussed with the TD of Bouge de là)
- 48 dimmers min. /60 max.
(could possibly work with 24 dimmers, to be discussed depending on the space and available equipment.)
- 6 booms, 6' minimum (2 can be supplied by the company)
- ETC Express lighting board or MA2 on PC *(can be supplied by the company)*
- DMX (XLR 3) cabling and three AC lines for our LED

COMMUNICATION

- 3 Clear-Com single-ear headset packages (2 for the control booth and 1 backstage)

SOUND

- Sound system with a power of 100 dB required at the mixing console
- 3-way speaker system with subwoofer located on the proscenium arch (foreground)
- 2 to 4 stage monitors located at each corner of the stage
- 2 monitors for surround system on stands located behind the audience (the company can provide two monitors as needed)
- In the control booth, our sound board (X32) and our lighting board (ETC EXPRESS or MA2 on PC) must be side by side, for midi control
- The booth is preferably located in the performance space

DRESSING ROOMS AND LODGING

- 1 or 2 dressing room for 4 dancers (with functional shower, sink, mirrors, and toilets)
- Spring water
- Ice (made from water) on hand in case of injury
- Fresh fruit (non-mandatory) is appreciated by the dancers
- Washing machine/dryer (please notify us if these are not on hand at the space)
- Clothing iron or steamer *(can be provided by the company)*
- The temperature on stage must be at 22° Celsius
- Parking for one 14' truck and one minivan
- We require 5 single occupation bedrooms and 1 double occupation bedroom for lodging in a 3-star standard (minimum) non-smoking hotel with free WIFI

TO BE SUPPLIED BY BOUGE DE LÀ:

SET

- The set consists of a 40' long track system suspended from our 40' truss, hang from our 3 or 4 chain hoists, which will need to be hung. We can hang directly to the fly system if available, we will install our border and our set of legs to hide the whole thing, the size can be adjusted to fit the venue, we just remove some truss to make it shorter.
- The total height is 15' with our truss and can be adjusted to 12' without the bridge lift by directly hooking it to the grid structure, **however this must be approved by the company's TD before.**
- The total weight of the set is approximately 250 pounds, spread on 3 to 4 chain block or on the fly system
- The company supplies its own black and grey dance floor marley and the tape.

SOUND

- We use our X32 sound board
- Performances are operated with Qlab software by our video and sound technician, while the technical director controls the lighting

Company TD Initials _____

Venue TD Initials _____

Page 2 of 6

updated: april 2020



LIGHTING

- We can provide gels as needed
- 9 LED, Blizzard Lighting, Pixelstorm COB Mini (3 floor and 6 suspended), connected by u-ground and XLR 3 to our stage right opto splitter in Universe 2 of our lighting board.
- 4 FRESNEL 650W, downstage floor plug in our small dimmer
- Shadow lights (ALTMAN FRESNEL) downstage also plug in our small dimmer
- Water FX light plus in our small dimmer

VIDEO

- Our video projector is placed on the ground down stage right, which will cast images on our white curtains
- A 200' video snake will run from the control room to the video projector. It includes the DMX connection for the LEDs and our dimmers.

Company TD Initials _____

Venue TD Initials _____

BOUGE DE LÀ

DANSE JEUNE PUBLIC

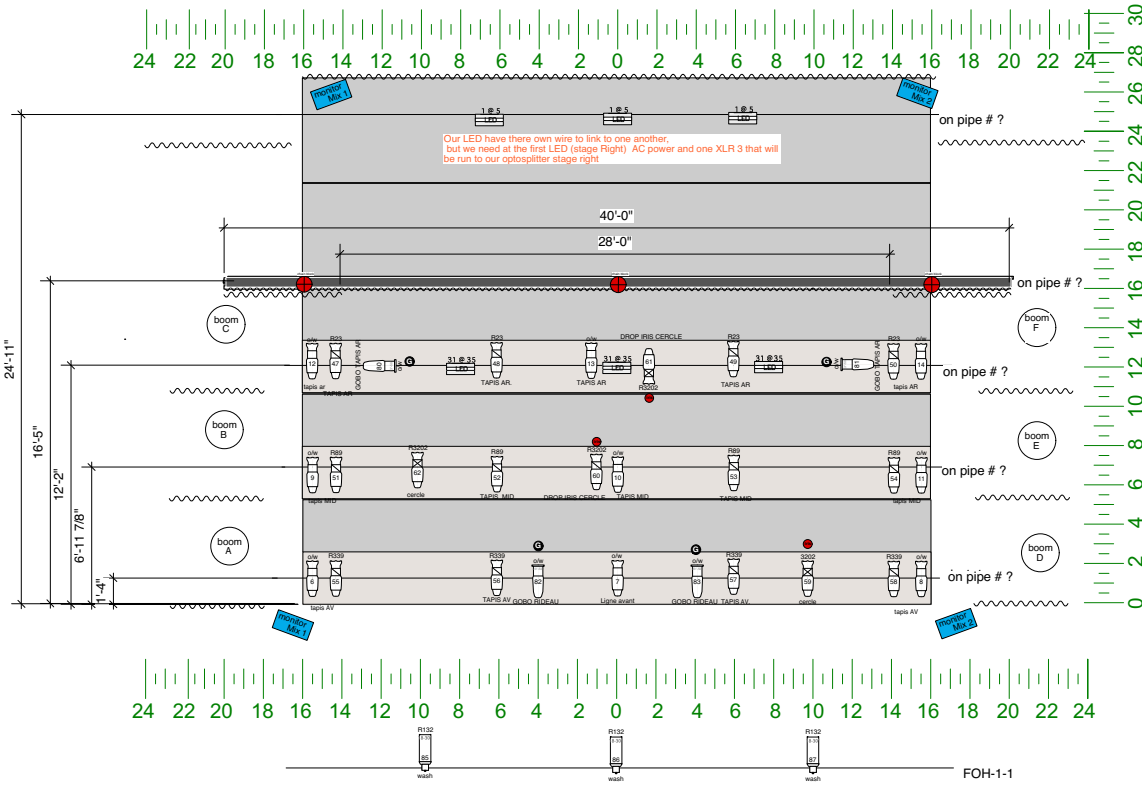


Company TD Initials _____

Venue TD Initials _____

BOUGE DE LÀ

DANSE JEUNE PUBLIC



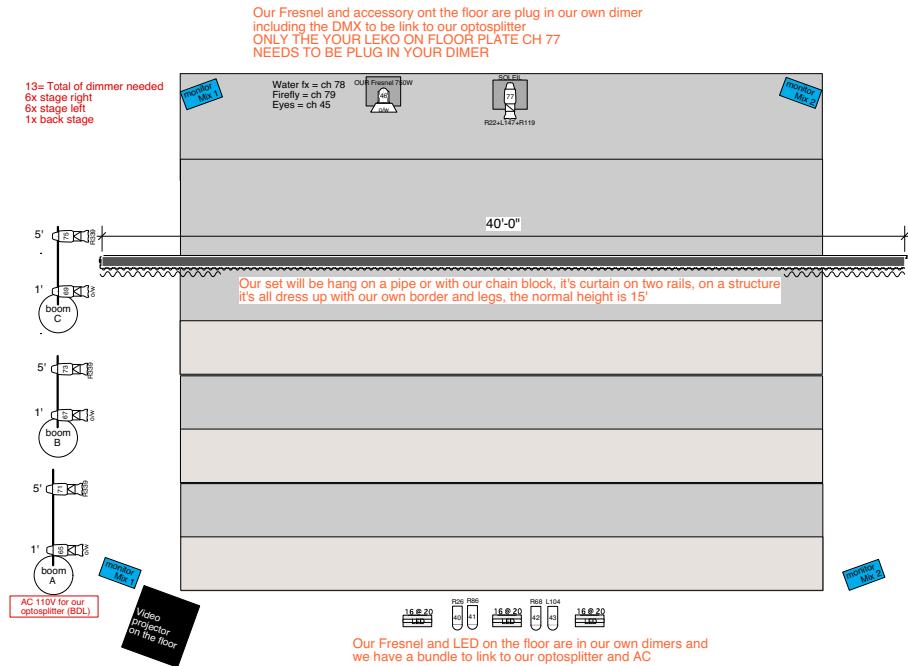
Through my eyes
Bouge De là
Venue:

Instruments	Num In Inventory	Used	Remaining
ETC 50 deg		0	
ETC 50 deg		12	
ETC 36 deg		9	
ETC 26 deg		14	
ETC 19 deg		3	
ETC 25/50 deg		4	
Leko FOH 15/30		3	
Led Blizzard	9 Led from Bouge de là		
Legend			
	4 x gobo holder 8 sizes		
	3 x drop iris		
	Color gobo		
design: Lucie Bazzo	scale 1/4"=1'		
Technical Director Martin LePage 514-808-6607	date: oct 2019		
NOTE house light ch 96 work light (if needed) ch 95 MC if needed ch 94 No need for smoke			

Company TD Initials _____
Venue TD Initials _____

BOUGE DE LÀ

DANSE JEUNE PUBLIC



Through my eyes Bouge De là

Venue:

Instruments	Num In Inventory	Used	Remaining
ETC 50 deg		0	
ETC 50 deg		12	
ETC 36 deg		9	
ETC 26 deg		14	
ETC 19 deg		3	
ETC 25/50 deg		4	
Ieko FOH 15/00		3	
Led Blizzard		9	Led from Bouge de là
	Num In Inventory	Used	Remaining

Legend

- 4 x gobo holder B sizes
- 3 x drop iris

Color:
 Channel:
 Purpose:

design: Lucie Bazzo scale 1/4"=1"
 date: oct 2019

NOTE
 Technical Director
 Martin Lepage
 514-808-6607

house light ch 96
 work light (if needed) ch 95
 MC if needed ch 94
 No need for smoke

Company TD Initials _____
 Venue TD Initials _____